

STRATEGIC PLAN 2025 – 2028

Strategy Goal

A trusted organisation, that delivers measurable and sustainable impact through growth, long-term resilience, and community partnerships.

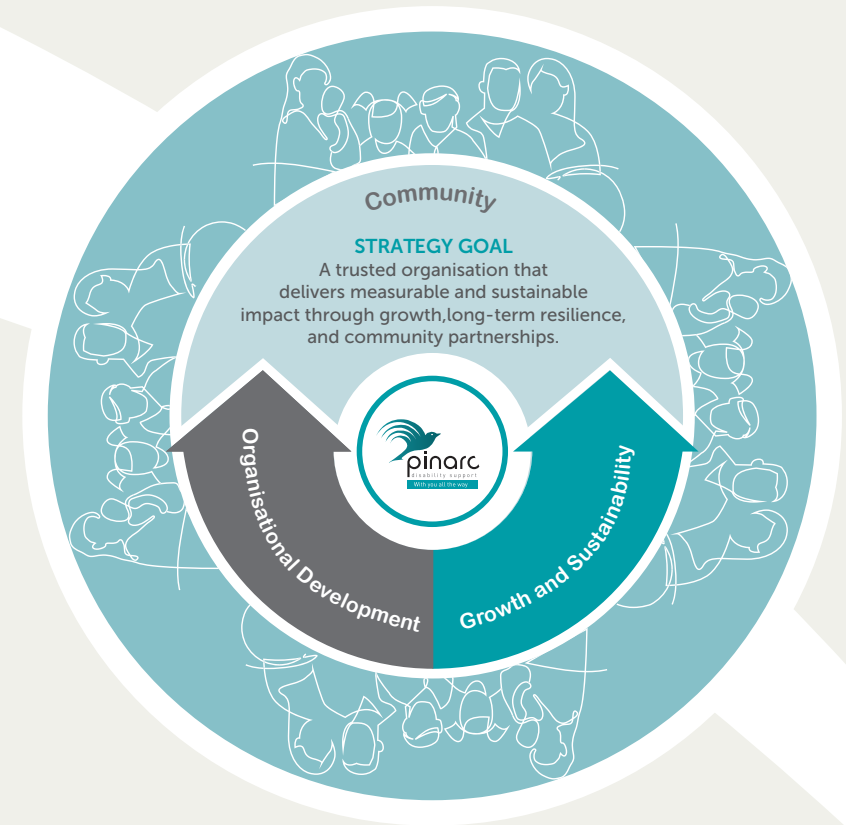
Our objective is to firmly establish Pinarc as a trusted advisor within the market recognised as a leader and specialist in our core domains of education, therapy, and disability services.

- Delivering high-quality, customer-centric programs
- Partnering with key stakeholders to amplify our impact
- Exploring new opportunities that align with our strengths and market demands

This focus leverages our robust capabilities, positioning us for sustainable growth and alignment with emerging government policies.

Strategic Rationale

- **Trust:** Signals transparency, integrity, and reliable services to all stakeholders
- **Growth:** Commits to expanding reach, capacity, and impact to meet community needs
- **Resilience:** Focuses on financial sustainability, environmental awareness, and a commitment to partnerships



Framework

The Strategic Plan is anchored in three central themes that will guide the organisation's future position, sharpen focus, and amplify impact. These themes establish a clear framework to ensure the long-term sustainability of Pinarc's important narrative.



Community

- Customers, Families, and Carers
- Workforce
- Stakeholders



Organisational Development

- Operational excellence
- Infrastructure
- Systems and Controls



Growth and Sustainability

- Growth Markets
- Pathways
- Partnerships